

N.W. 1/4 OF THE S.W. 1/4
SECTION 23, T.5N., R.2W., S.L.B. & M.

IN ROY CITY

SCALE 1" = 100'

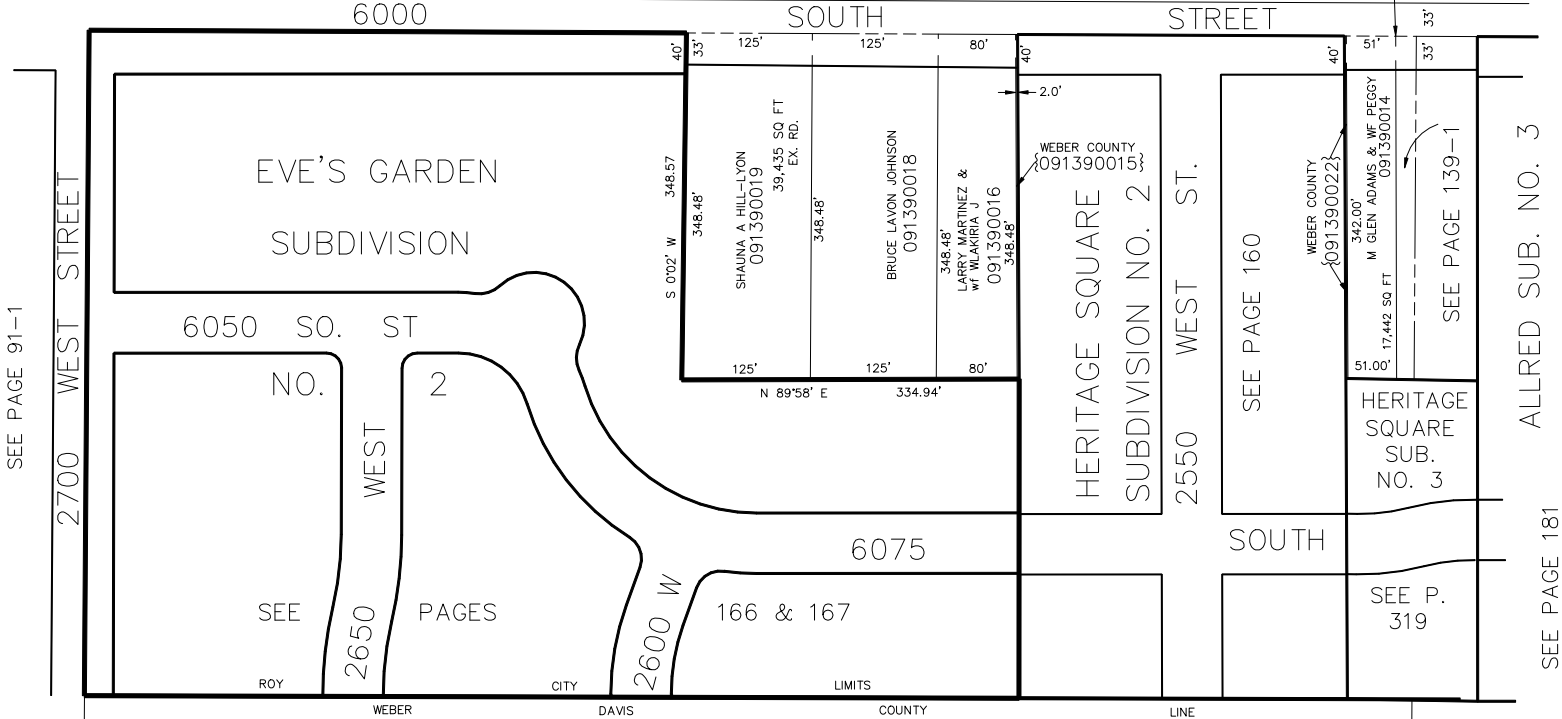
TAXING UNIT: 41

SEE PAGE 123

SEE PAGE 124

SEE PAGE 123

1335' W
FR N.E. COR
OF S.E. 1/4



SEE PAGE 91-1

2700 WEST STREET

EVE'S GARDEN
SUBDIVISION

6050 SO. ST
NO. 2

SEE

2650 WEST
PAGES

ROY

WEBER

CITY

DAVIS

LIMITS

COUNTY

2550 WEST ST.

HERITAGE SQUARE
SUBDIVISION NO. 2

SEE PAGE 160

WEBER COUNTY
091390022

HERITAGE
SQUARE
SUB.
NO. 3

SEE P.
319

SEE PAGE 139-1

ALLRED SUB. NO. 3

SEE PAGE 181

DAVIS

COUNTY